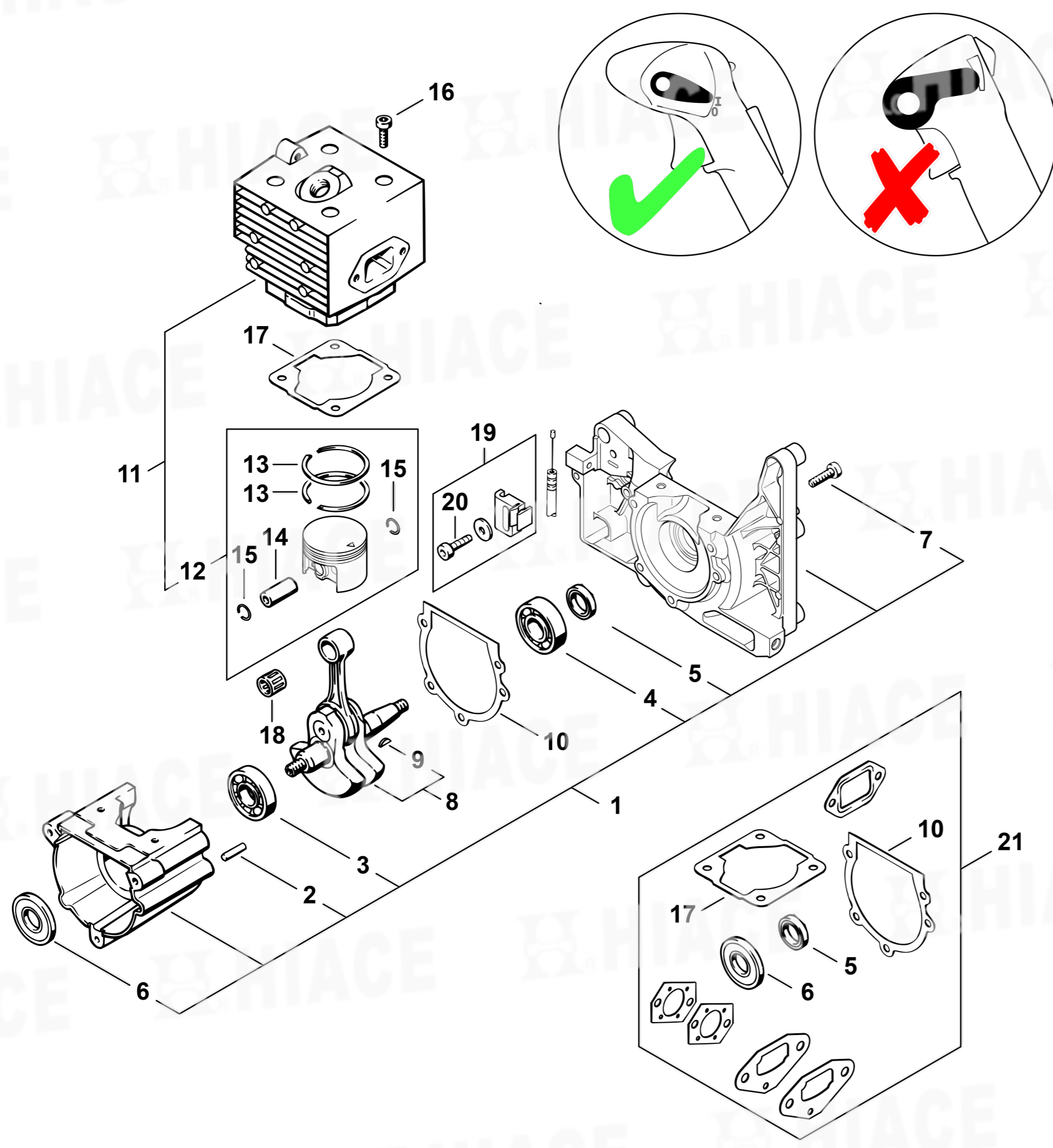
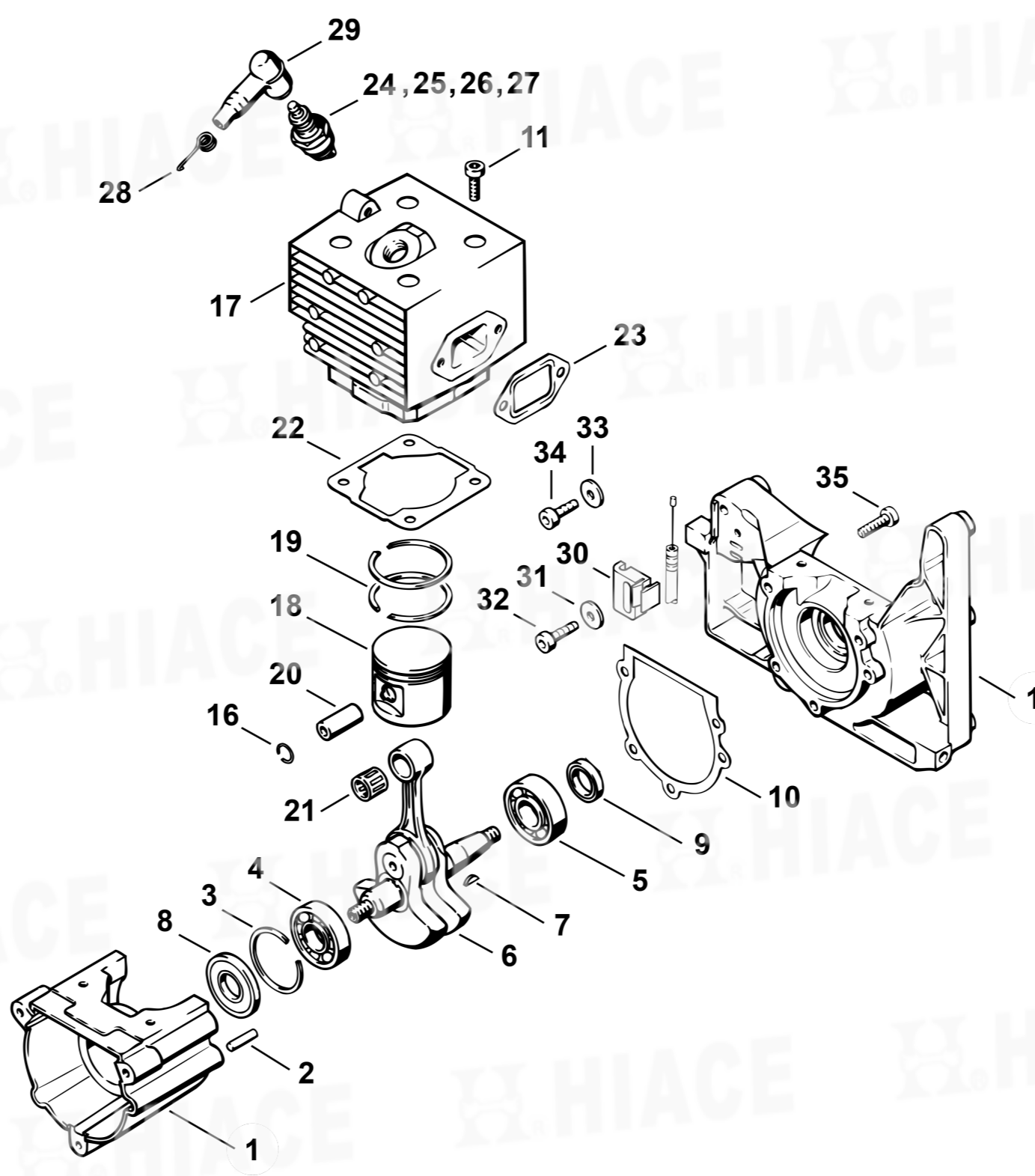


SR-420 引擎風力式噴霧機

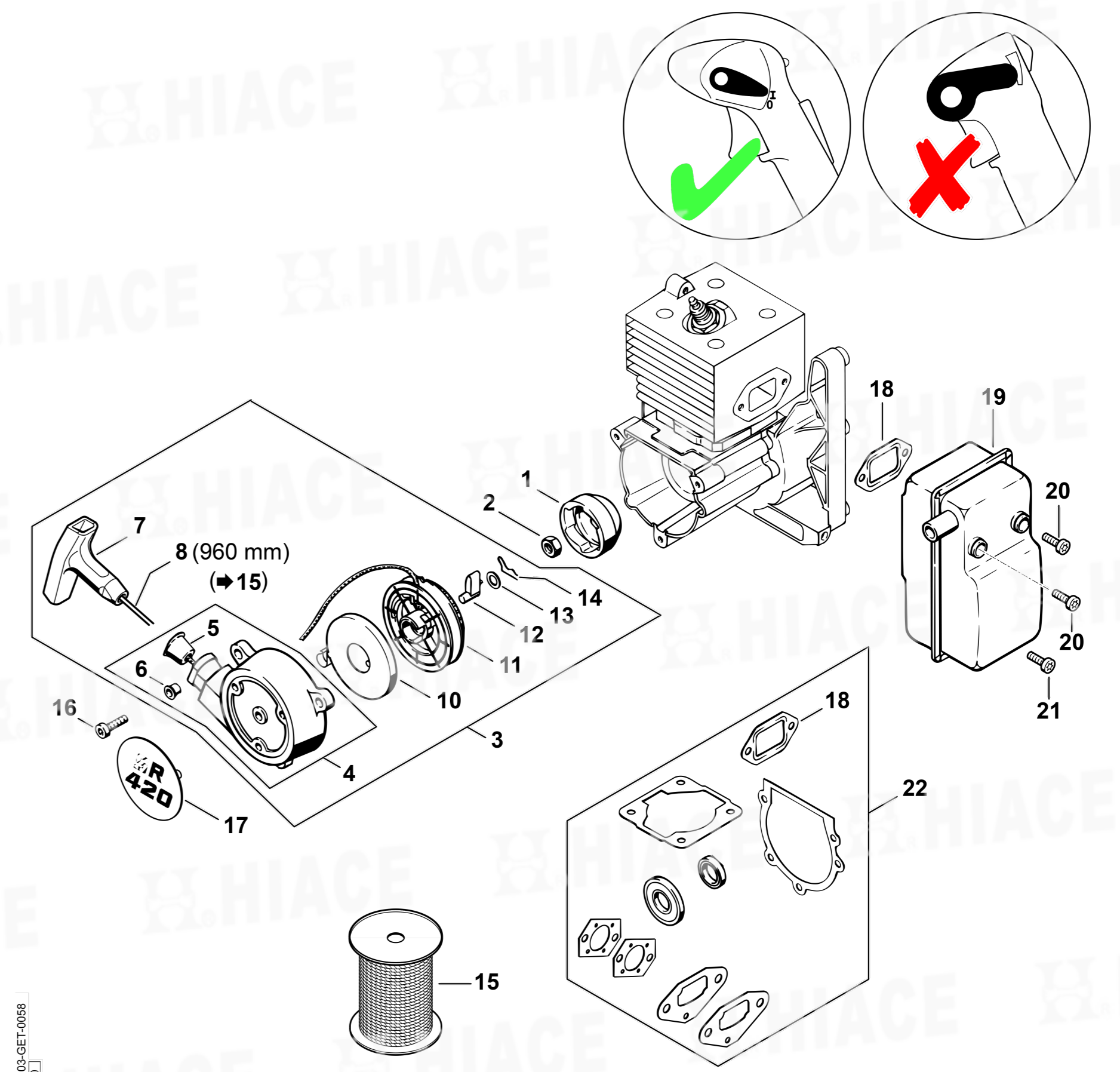
曲軸箱、汽缸
Crankcase, Cylinder



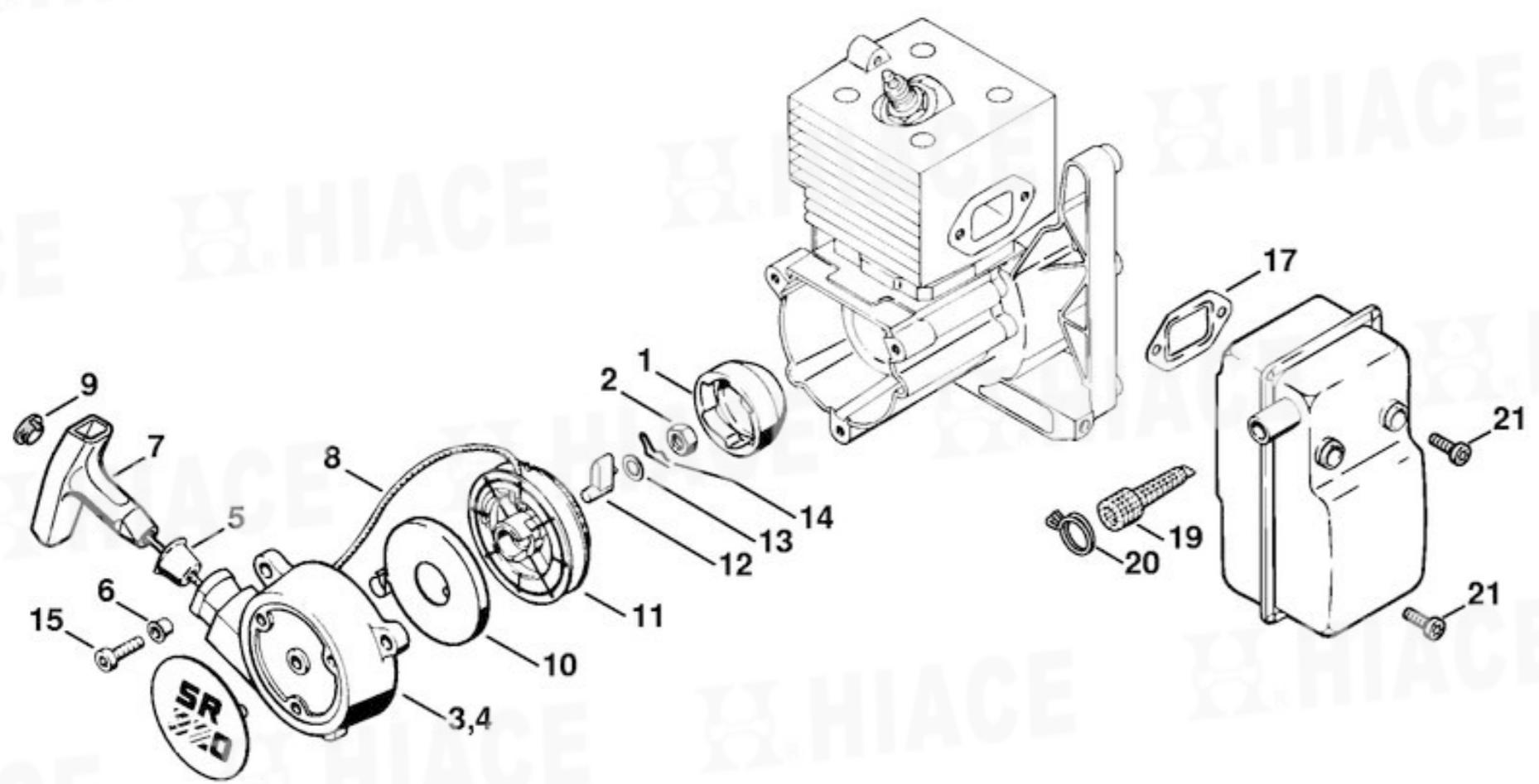
曲軸箱、汽缸
Crankcase, Cylinder



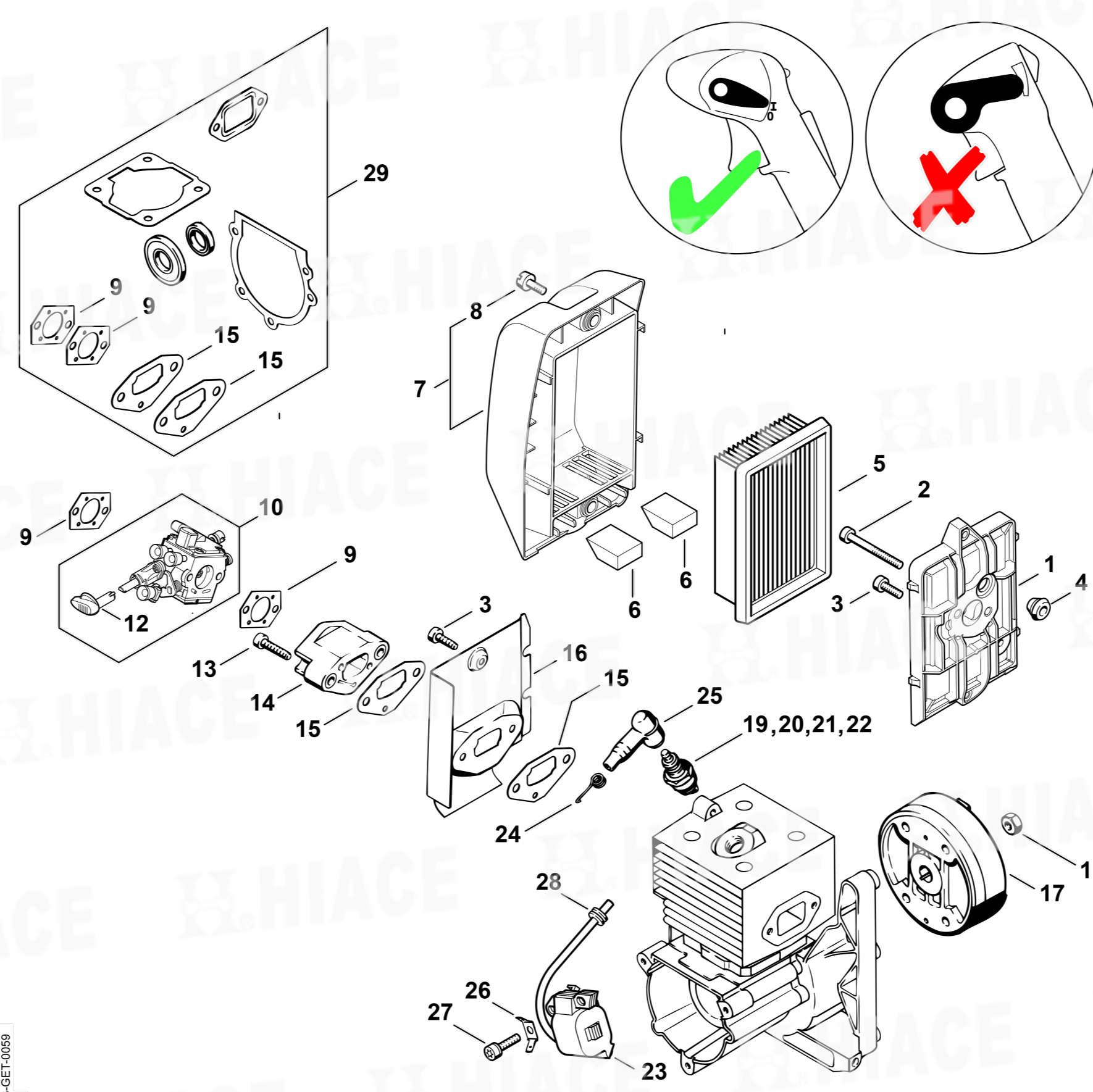
啟動裝置、消音器
Rewind starter, Muffler



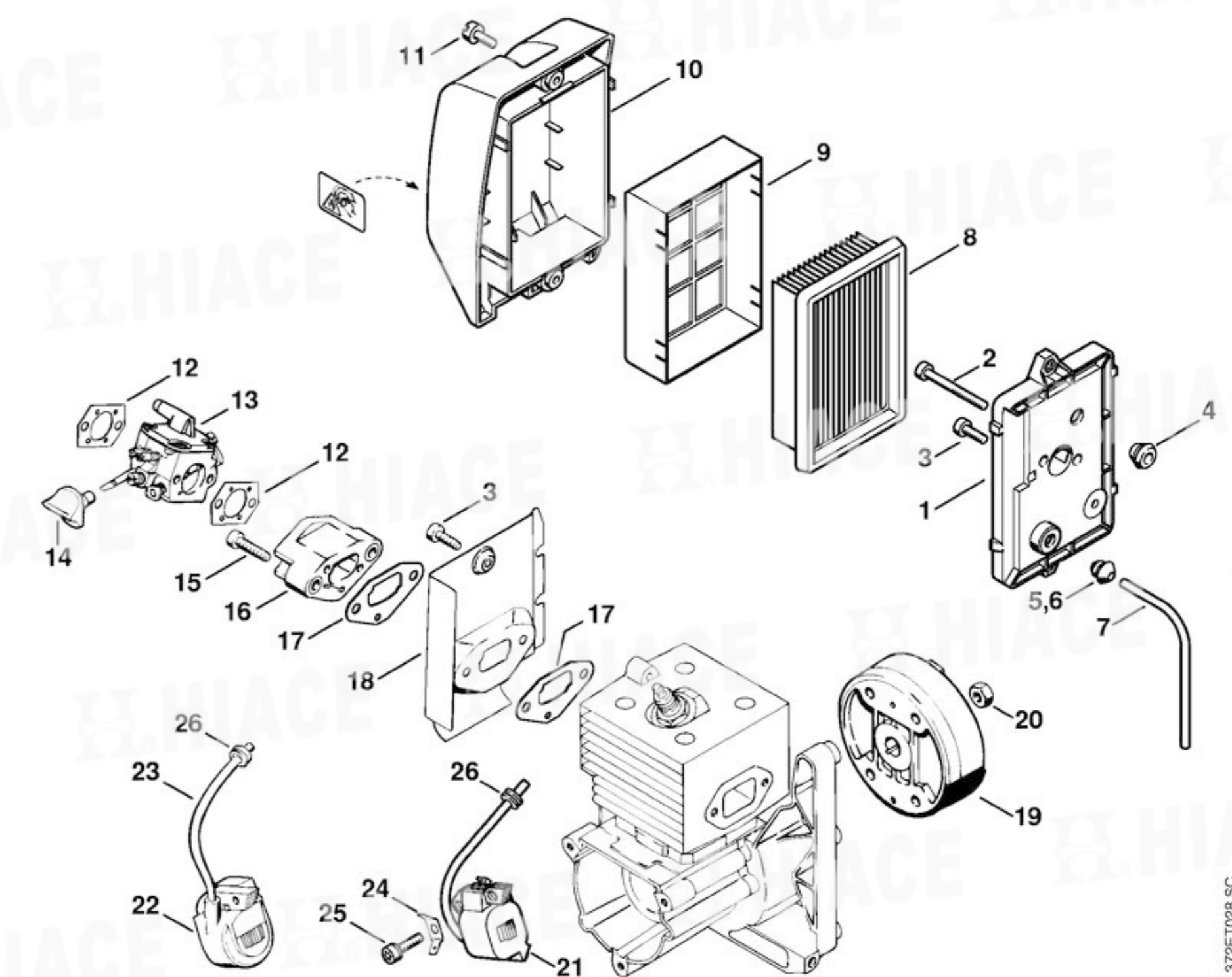
啟動裝置、消音器
Rewind starter, Muffler



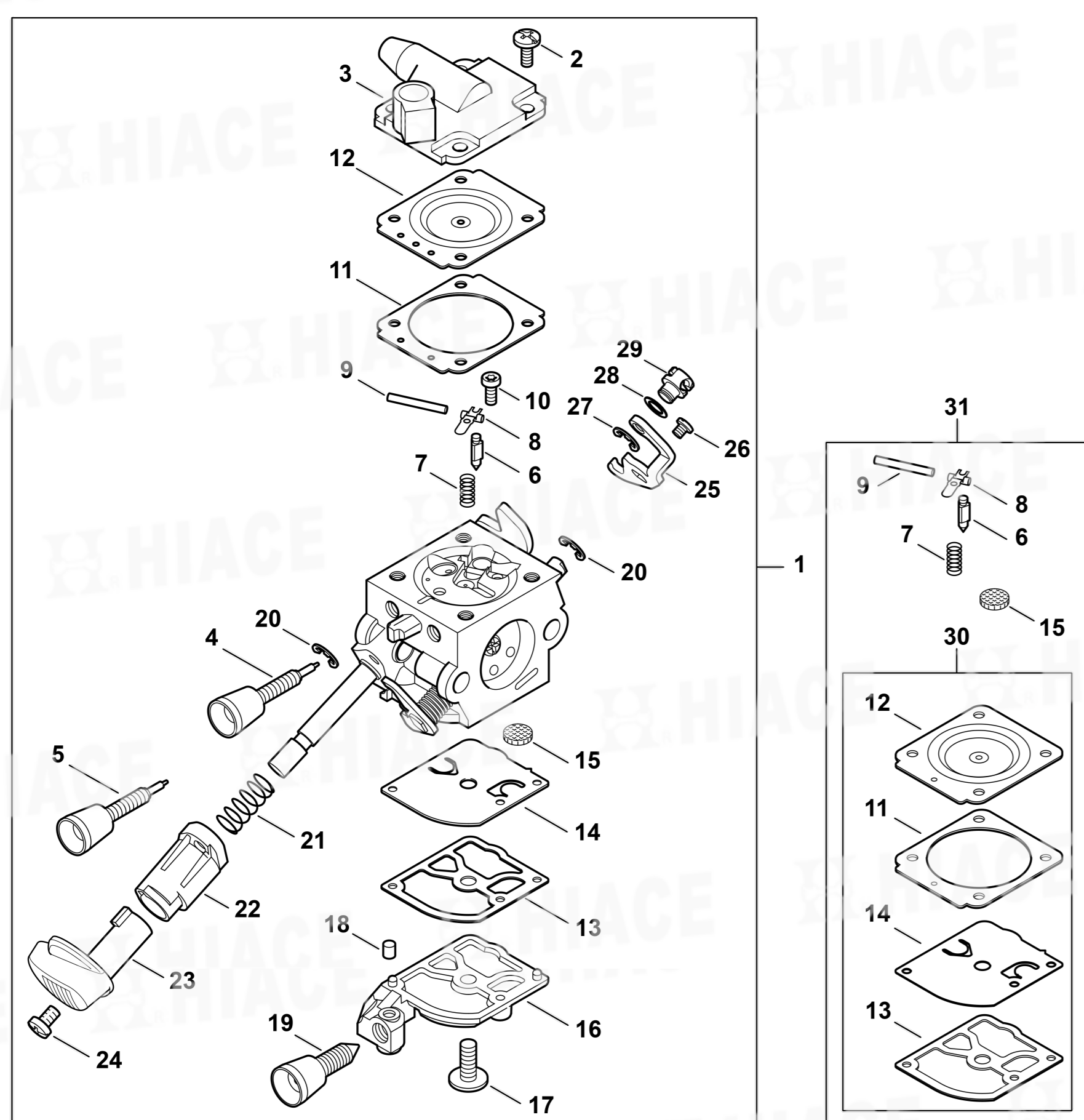
空氣過濾器、點火系統
Air filter, Ignition system



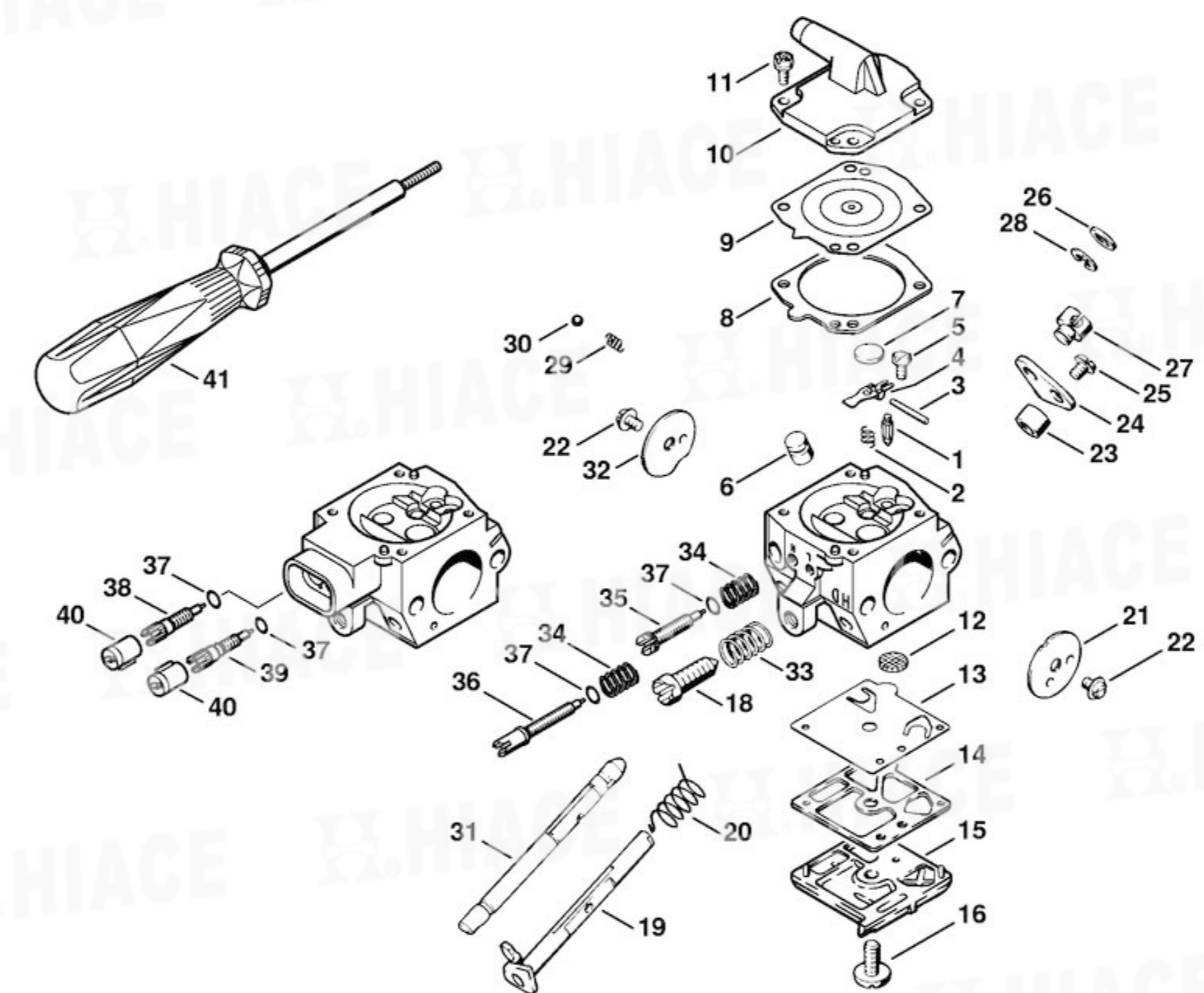
空氣過濾器、點火系統
Air filter, Ignition system



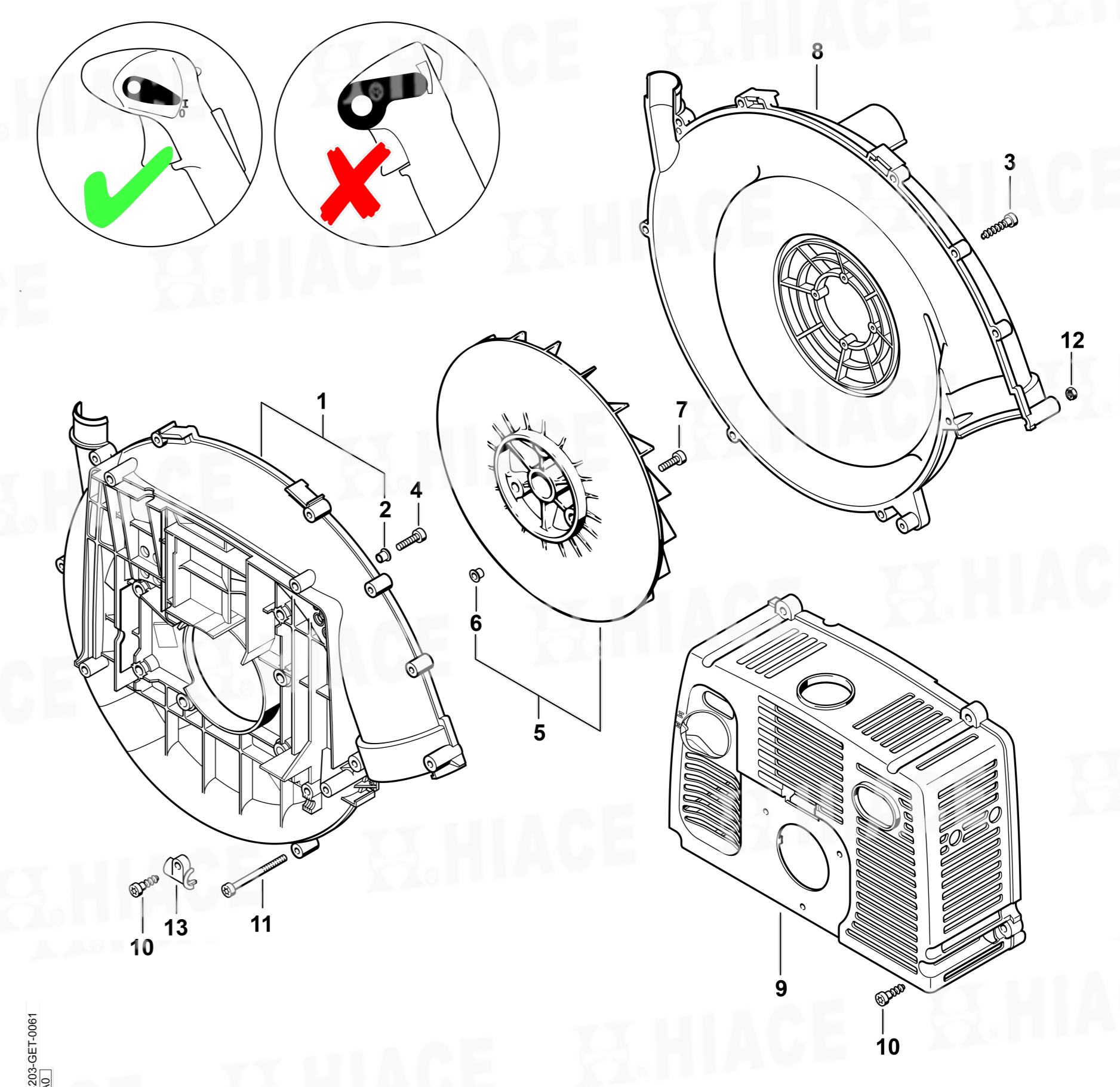
化油器
Carburetor
4203/11



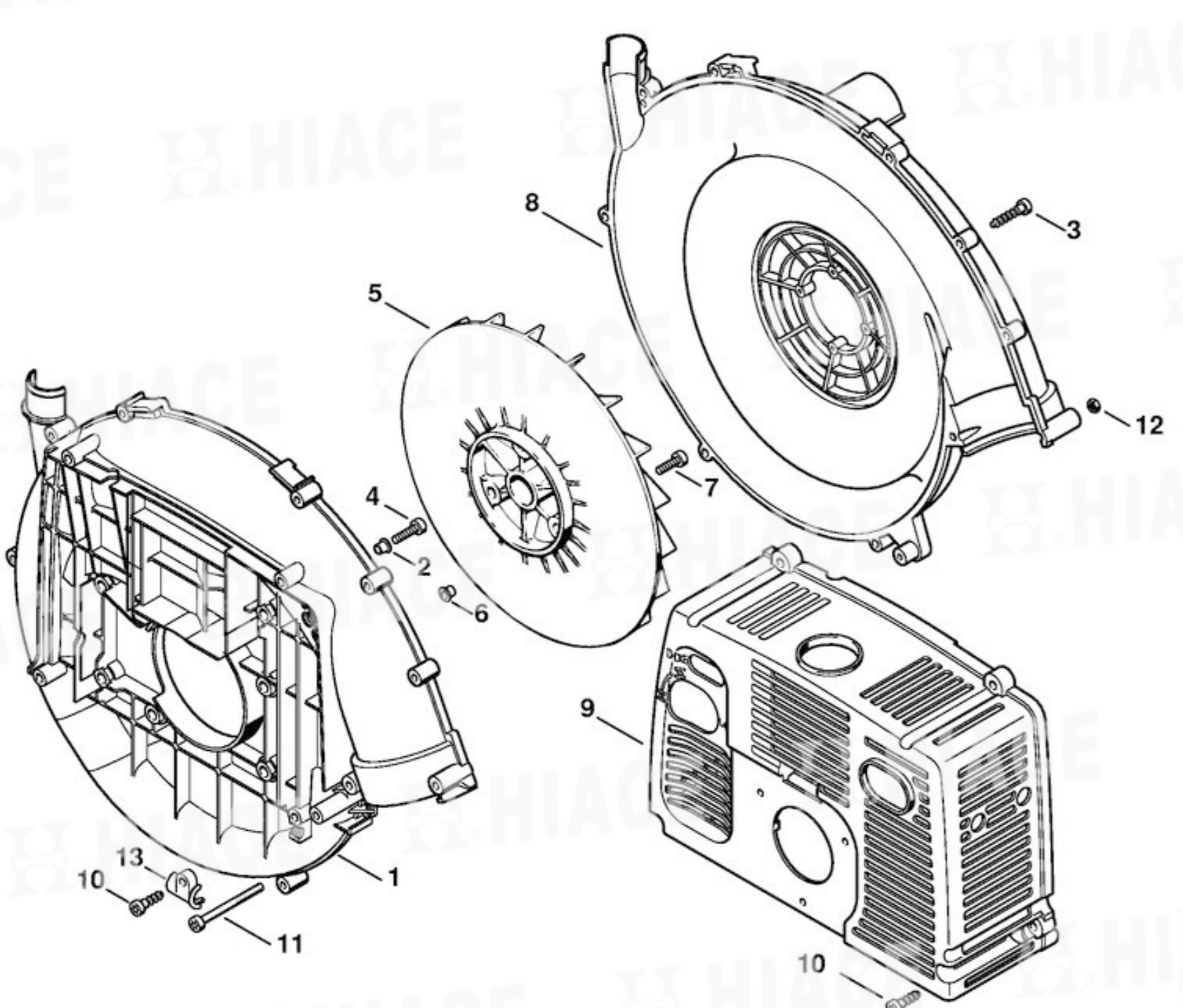
化油器
Carburetor
HD-28、HD-29、HD-45



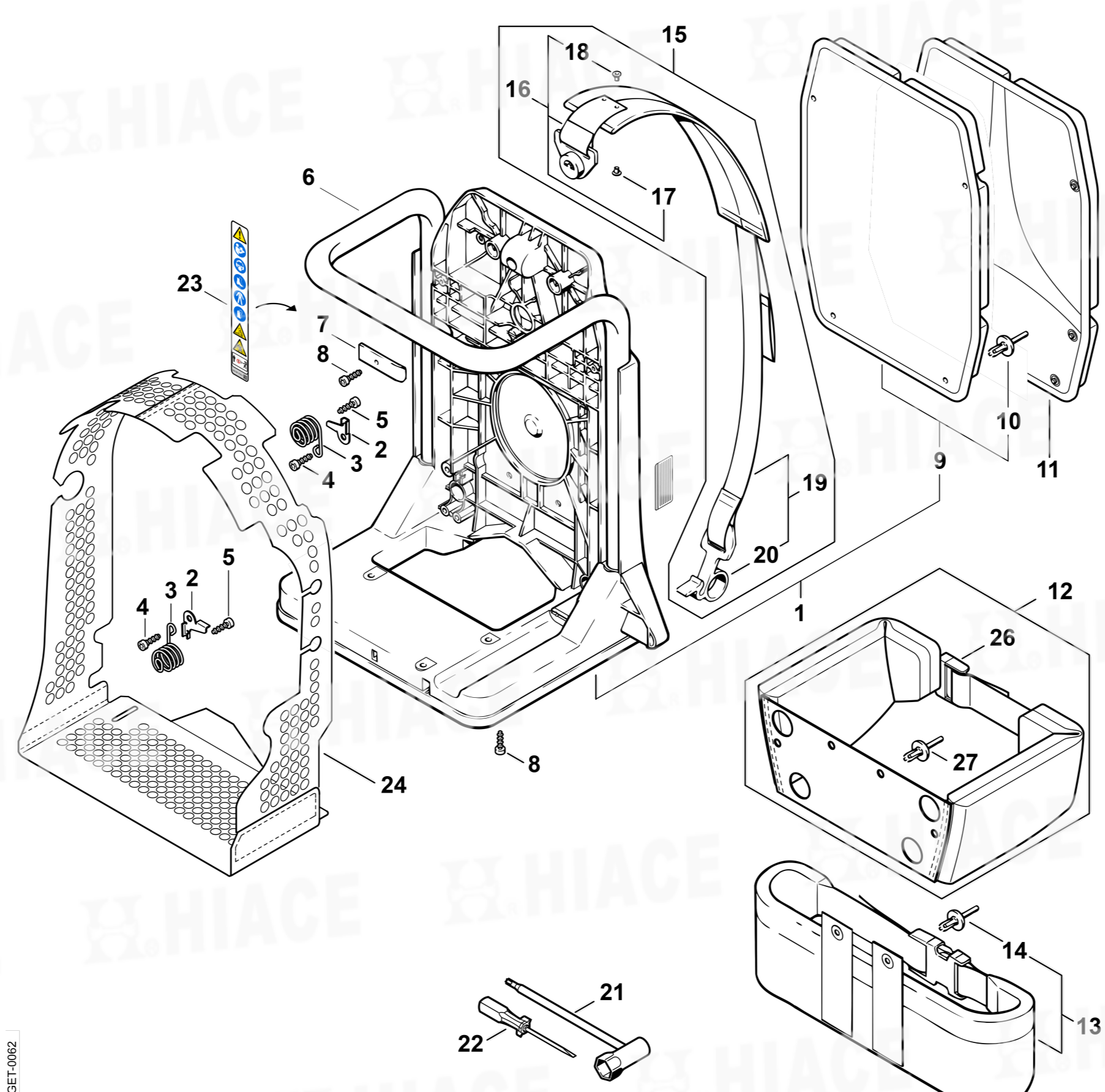
風扇罩
Fan housing



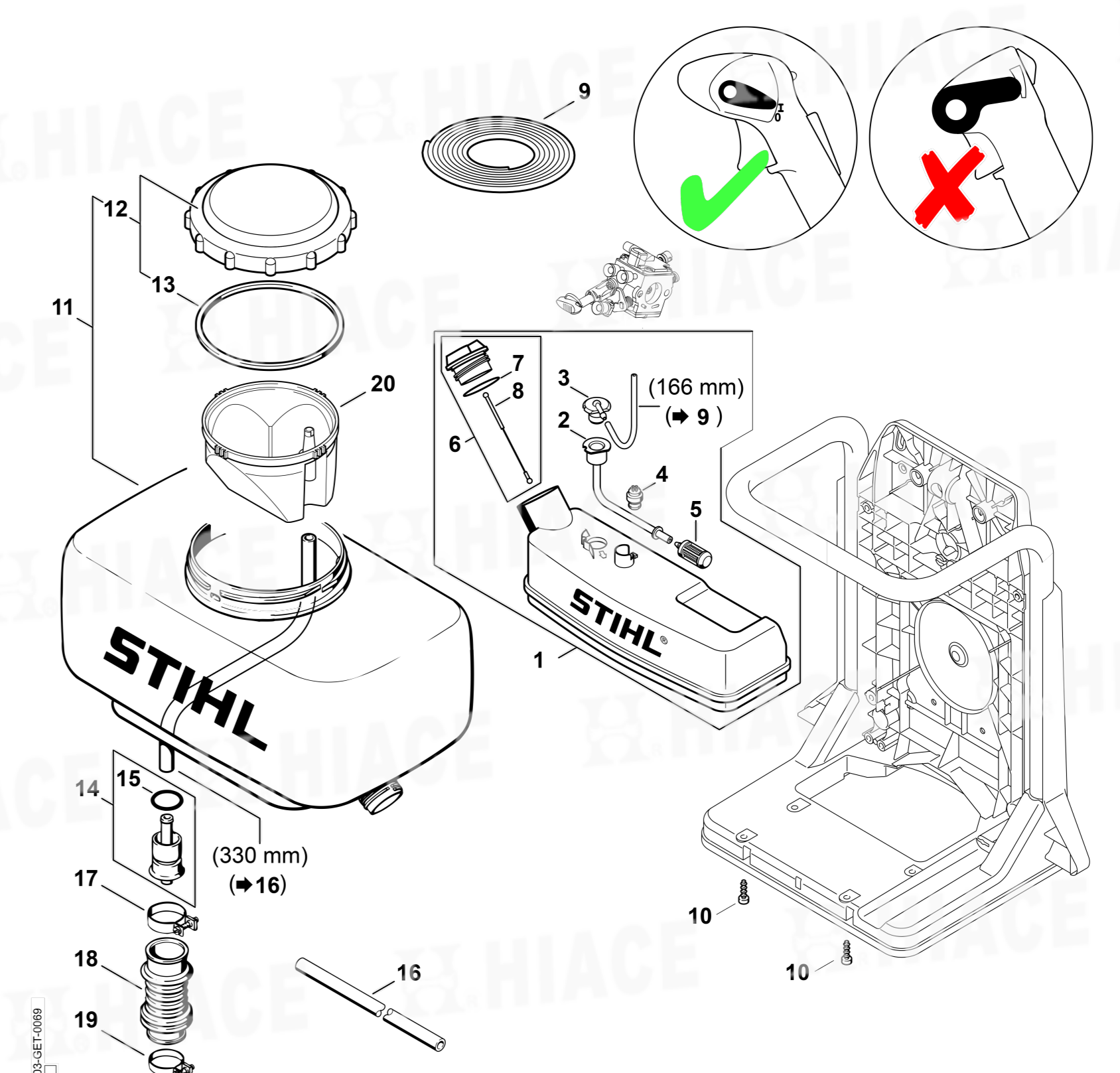
風扇罩
Fan housing



背板
Backplate

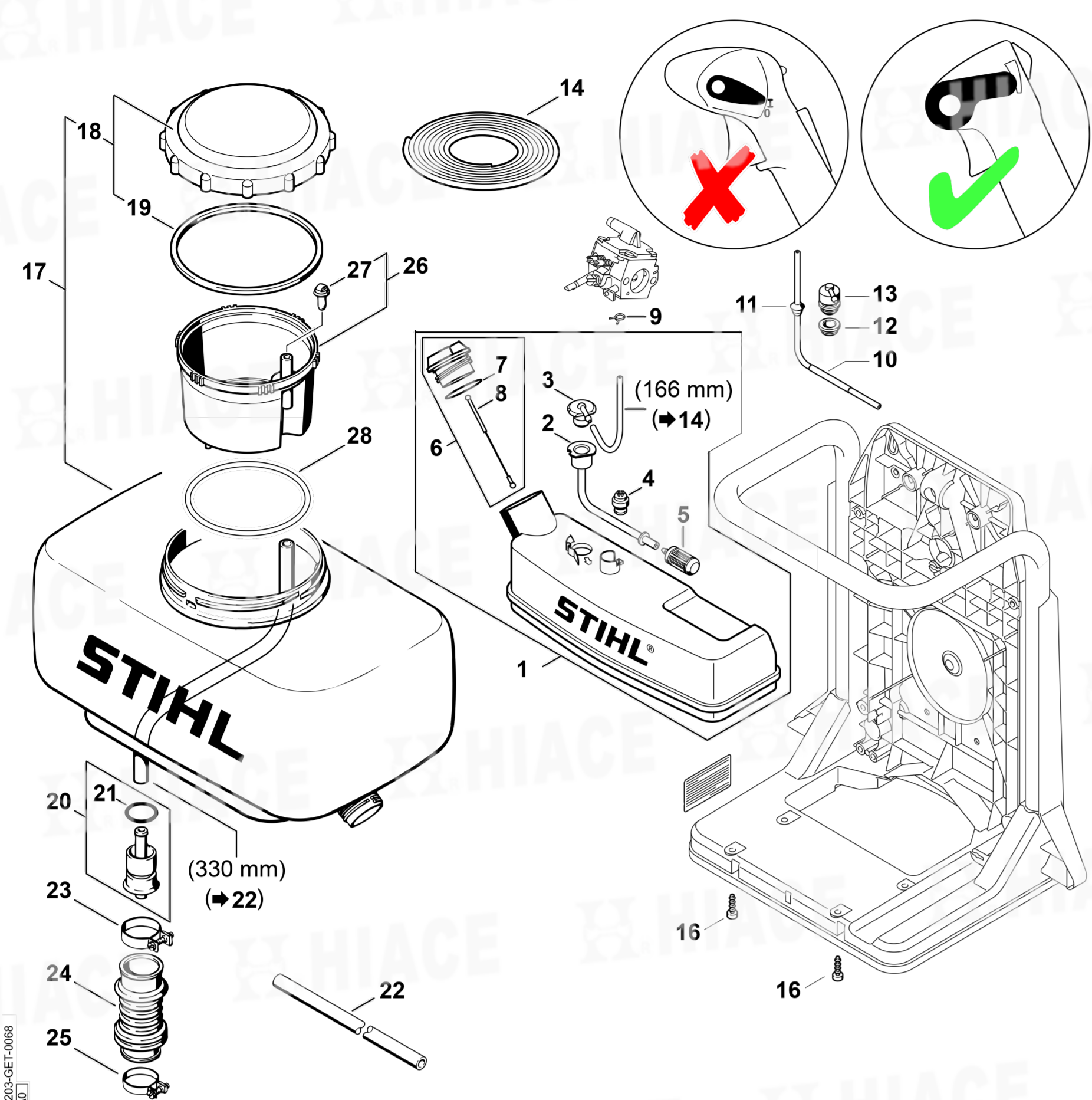


燃油箱、形容器
Fuel tank, Container

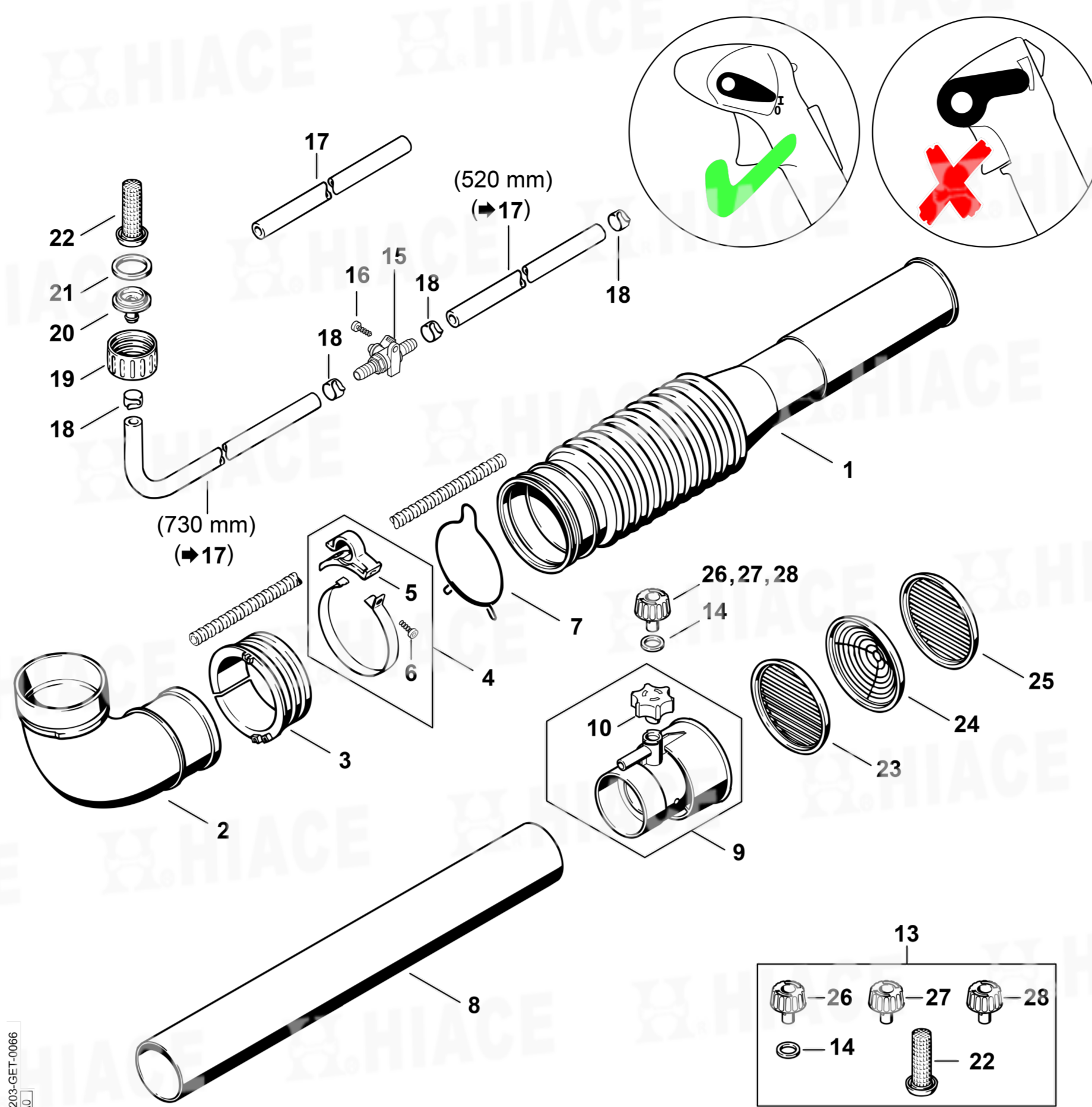


SR-420 引擎風力式噴霧機

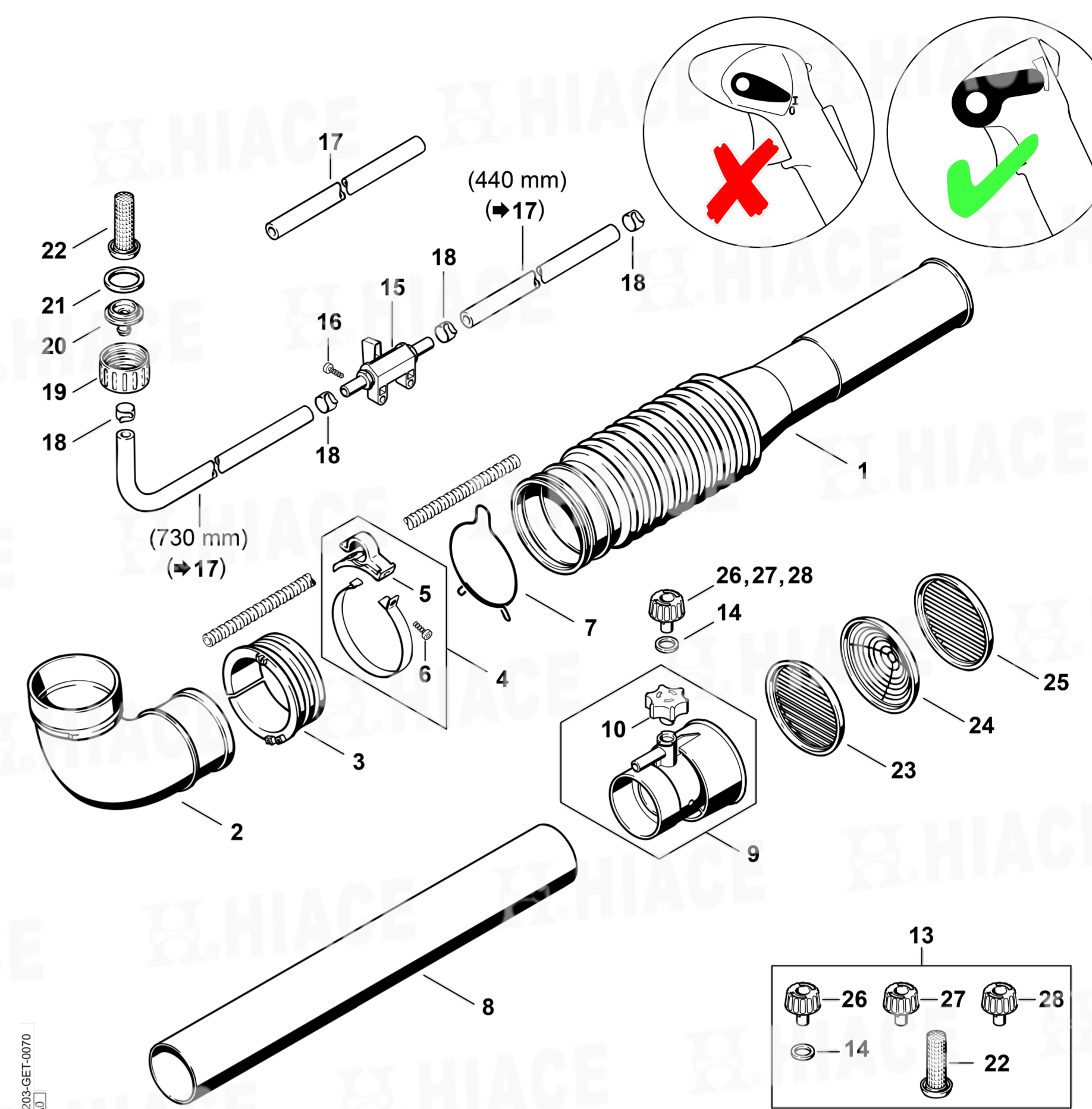
燃油箱、形容器
Fuel tank, Container



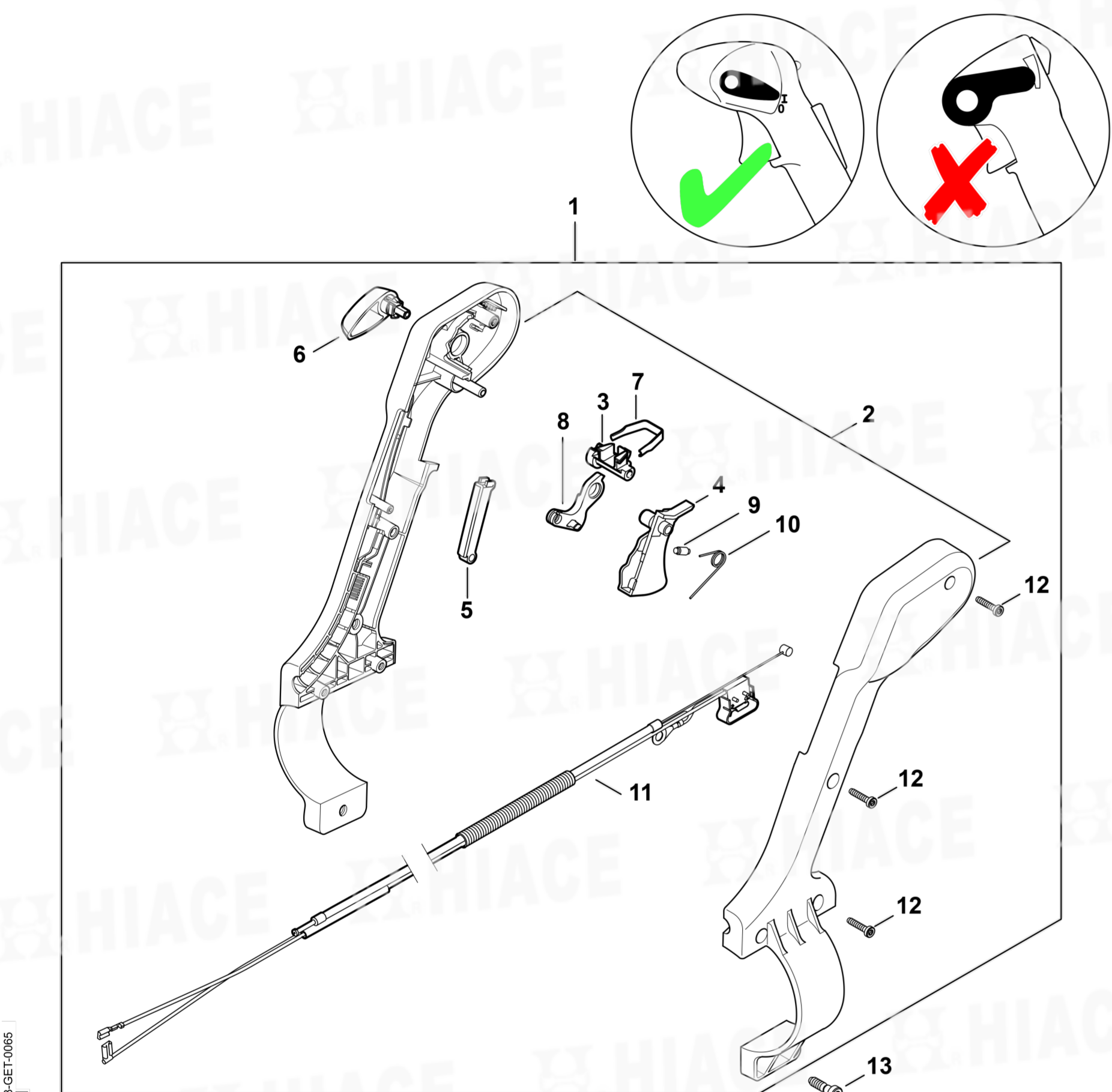
摺形軟管、ULV噴嘴
Pleated hose, ULV nozzle



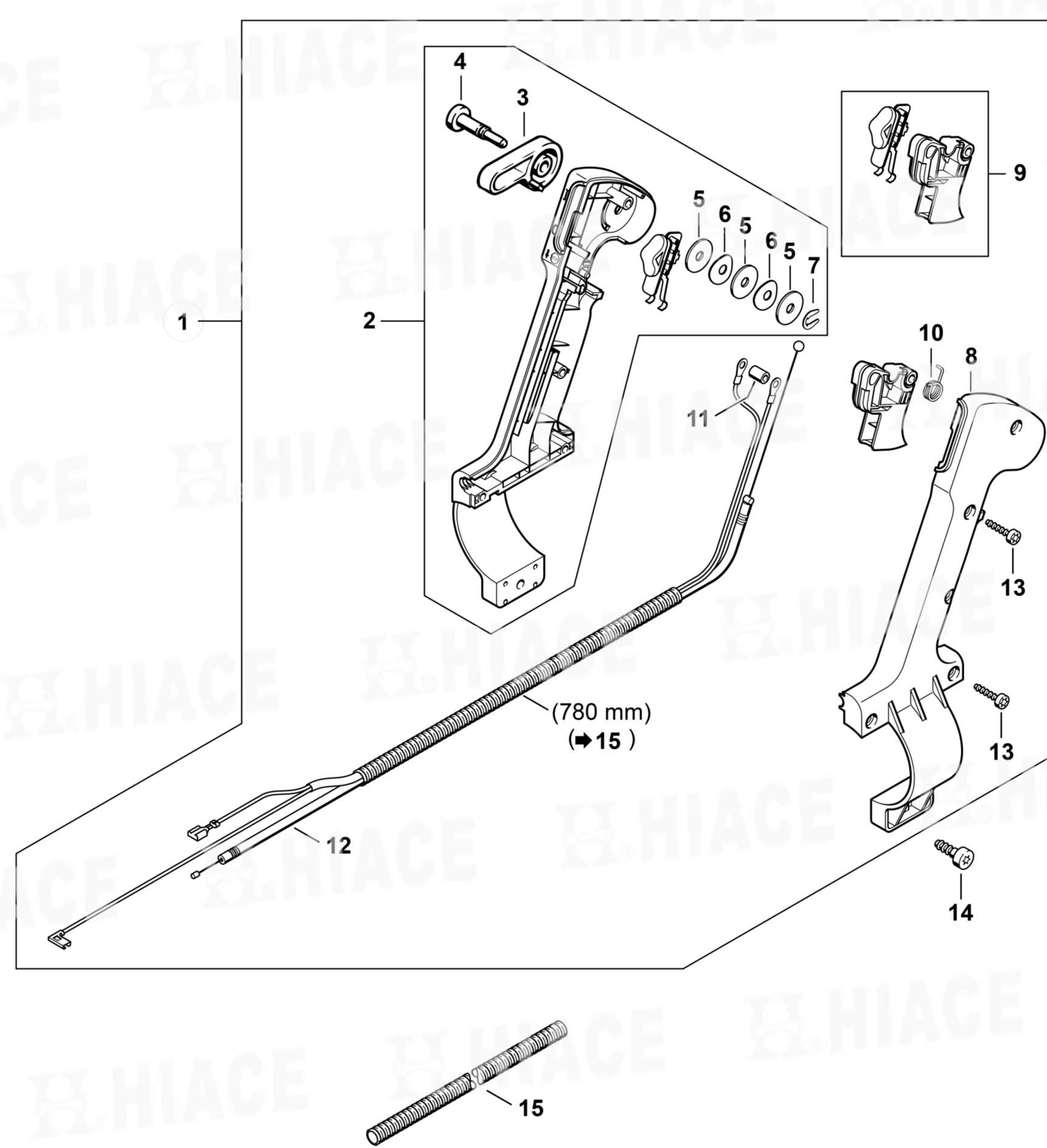
摺形軟管、ULV噴嘴
Pleated hose, ULV nozzle



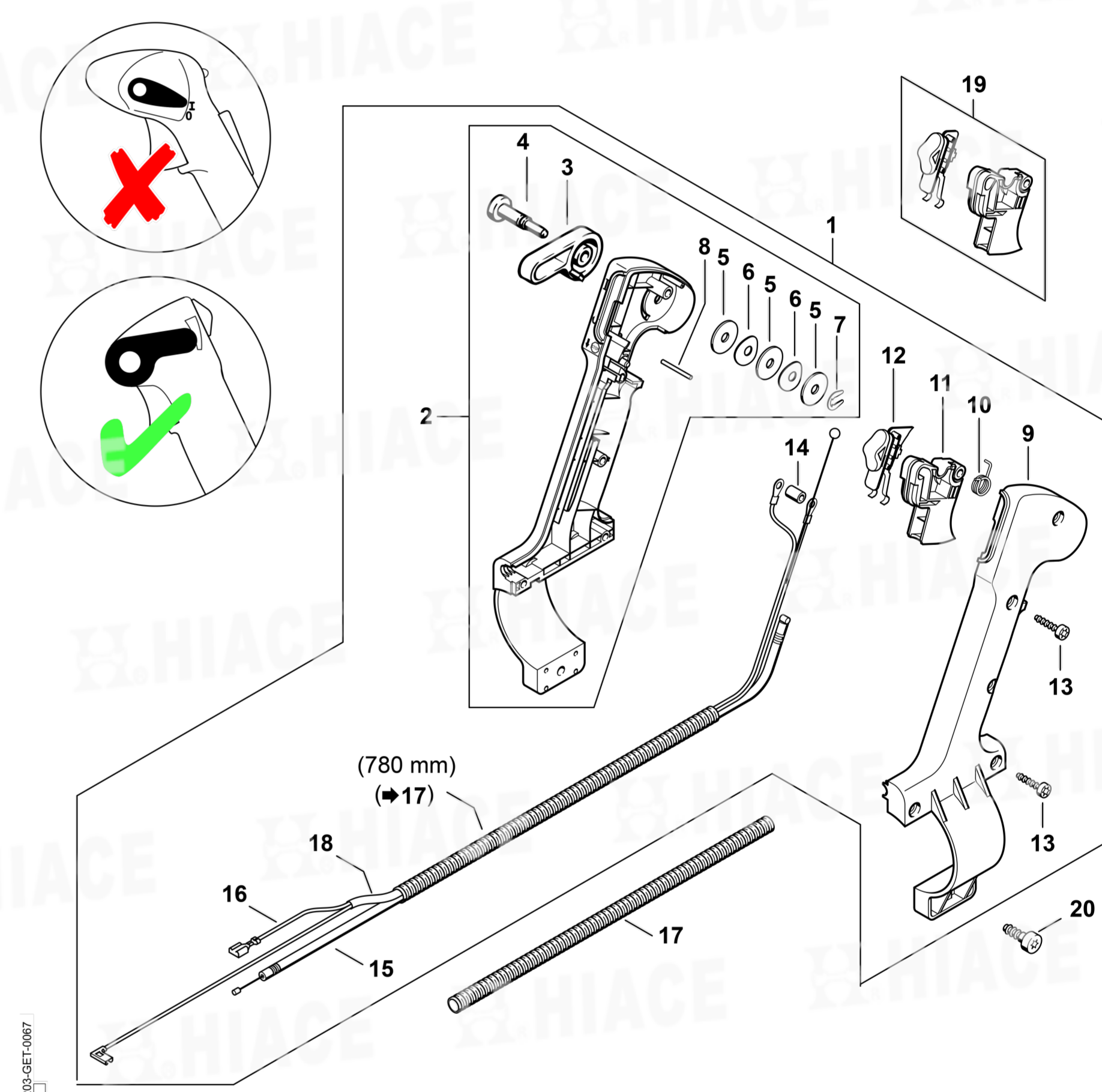
操作把手
Control handle



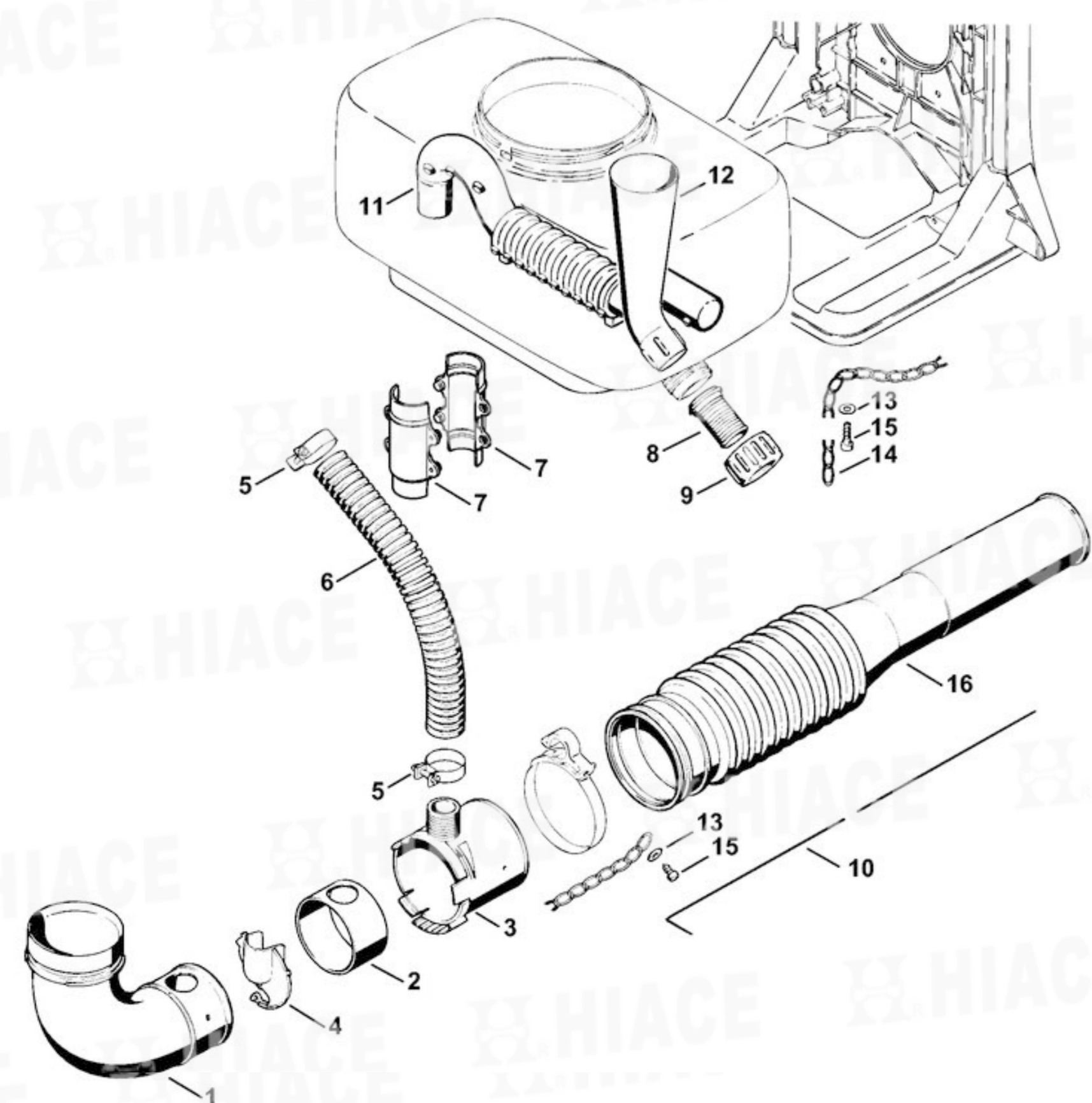
操作把手
Control handle
Ø 67 mm



操作把手
Control handle



除塵與噴灑顆粒套件
Dusting and granulate spreading attachment



壓力泵
Pressure pump

